

## UP-HR200-12



Specification		
Nominal Voltage	12V	
Watts(15min Rate)	675.8 W at 1.67V/cell	
Dimension	Length	522±3mm (20.55 inches)
	Width	240±2mm (9.45 inches)
	Container Height	218±2mm (8.58 inches)
	Total Height (with Terminal)	224±2mm (8.81 inches)
Approx Weight	Approx 62.5 kg (137.8lbs)	
Terminal	T11	
Container Material	ABS	
Rated Capacity	206.0 AH/20.6A	(10hr, 1.80V/cell, 25°C/77°F)
	200.0 AH/25.0A	(8hr, 1.80V/cell, 25°C/77°F)
	173.5 AH/34.7A	(5hr, 1.75V/cell, 25°C/77°F)
	157.8 AH/52.6A	(3hr, 1.75V/cell, 25°C/77°F)
	149.6 AH/149.6A	(1hr, 1.60V/cell, 25°C/77°F)
Max. Discharge Current	2000A (5s)	
Internal Resistance	Approx 2.7mΩ	
Operating Temperature Range	Discharge: -15~50°C (5~122°F)	
	Change : 0~40°C (32~104°F)	
	Storage : -15~40°C (5~104°F)	
Nominal Operating Temperature Range	25±3°C (77±5°F)	
Cycle Use	Initial Charging Current less than 60.0A.Voltage. 14.4V~15.0V at 25°C(77°F)Temp. Coefficient -30mV/°C	
Standby Use	No limit on Initial Charging Current Voltage. 13.5V~13.8V at 25°C(77°F)Temp. Coefficient -20mV/°C	
Capacity affected by Temperature	40°C (104°F) 103%	
	25°C (77°F) 100%	
	0°C (32°F) 86%	
Self Discharge	Batteries may be stored for up to 6 months at 25°C (77°F) and then a freshening charge is required.	

Constant Current Discharge (Amperes) at 25°C (77°F)														
F.V/Time	10min	15min	20min	30min	45min	1h	2h	3h	4h	5h	6h	8h	10h	20h
1.85V/cell	306.0	261.0	233.6	189.9	145.8	119.0	68.3	49.7	39.5	33.7	28.9	24.3	19.8	10.7
1.80V/cell	379.8	306.2	268.1	217.6	164.7	129.5	72.4	51.6	40.5	33.9	29.6	25.0	20.6	10.8
1.75V/cell	417.3	334.6	288.5	225.9	170.9	135.4	75.0	52.6	41.4	34.7	30.4	25.4	20.8	10.9
1.70V/cell	454.8	357.2	303.2	235.1	177.7	139.7	77.5	54.0	42.5	35.6	31.0	25.8	21.0	11.1
1.65V/cell	/	379.9	322.1	248.1	182.2	144.4	80.2	56.4	44.0	36.6	31.7	26.2	21.4	11.2
1.60V/cell	/	406.2	343.1	261.9	189.9	149.6	82.9	58.0	45.4	37.6	32.4	26.4	21.6	11.3

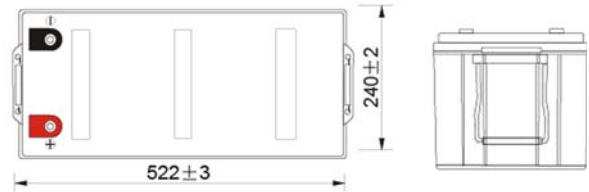
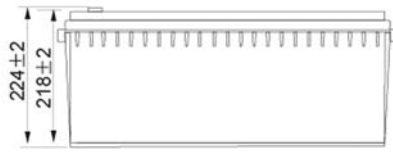
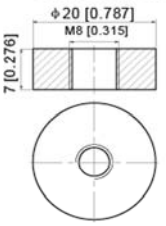
Constant Power Discharge (Watts) at 25°C (77°F)														
F.V/Time	10min	15min	20min	30min	45min	1h	2h	3h	4h	5h	6h	8h	10h	20h
1.85V/cell	565.4	487.1	440.4	362.1	280.3	229.6	132.6	97.3	78.0	67.0	57.9	47.5	39.2	21.2
1.80V/cell	693.2	563.8	498.0	408.5	314.1	248.4	139.6	100.6	79.6	66.9	59.0	48.8	40.5	21.4
1.75V/cell	749.5	608.3	530.6	420.5	322.8	258.7	144.2	102.0	81.1	68.5	60.3	49.5	40.9	21.6
1.70V/cell	798.5	640.4	553.5	435.3	334.5	266.0	148.6	104.7	83.1	70.1	61.5	50.2	41.3	22.0
1.65V/cell	/	675.8	583.6	455.4	339.7	273.0	152.9	108.7	85.7	71.9	62.8	50.8	42.1	22.2
1.60V/cell	/	710.8	615.0	477.5	352.2	281.1	157.2	111.6	88.1	73.6	63.8	51.2	42.5	22.3



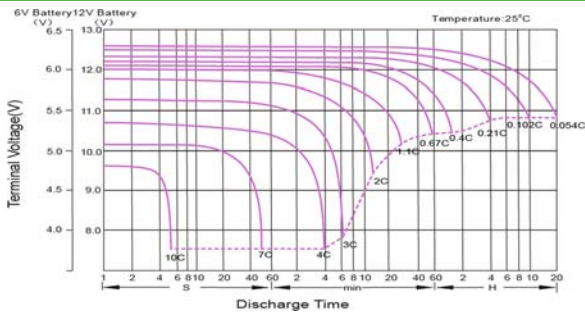
**UP-HR200-12**

**Dimensions**

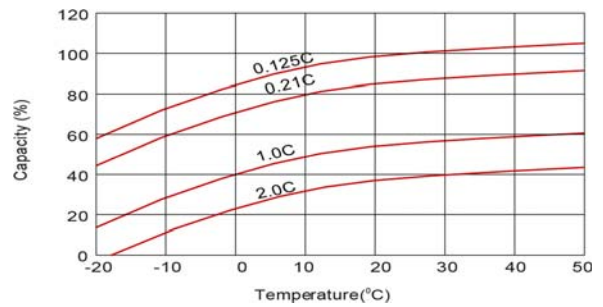
**T11 Terminal**  
Unit: mm [inches]



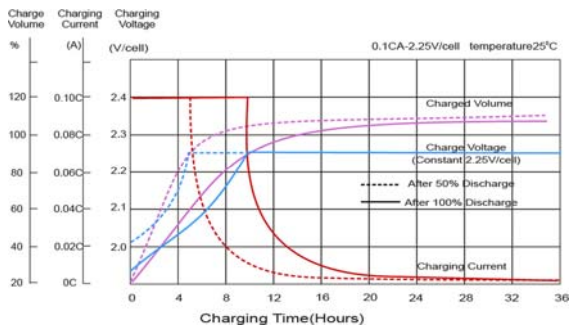
**Discharge Characteristics**



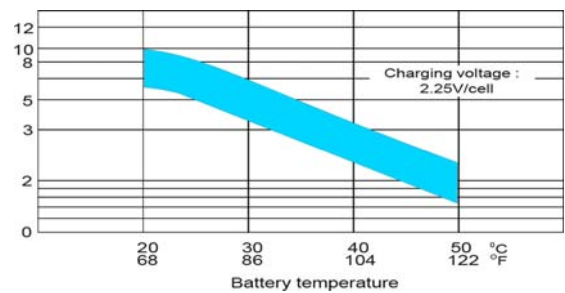
**Temperature Effects in Relation to Battery Capacity**



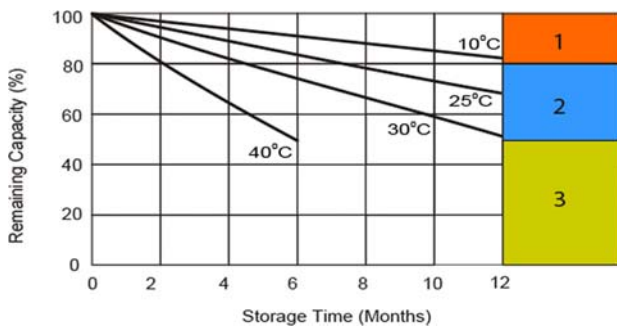
**Float Charging Characteristics**



**Effect of Temperature on Long Term Float Life**



**Self Discharge Characteristics**



- 1** No supplementary charge required (Carry out supplementary charge before use if 100% capacity is required).
- 2** Supplementary charge required before use. Optional charging way as below:
  1. Charged for above 3 days at limited current 0.25CA and constant voltage 2.25V/cell.
  2. Charged for above 20 hours at limited current 0.25CA and constant voltage 2.45V/cell.
  3. Charged for 8-10 hours at limited current 0.05CA.
- 3** Supplementary charge may often fail to recover the capacity. The battery should never be left standing till this is reached.



Poligono industrial La Dehesa  
C/ Dehesa Vieja, nº2 Nave 16  
28052 Madrid (Spain)  
Tel. (+34) 918 021 649  
Fax. (+34) 917 750 542  
info@masterbattery.es

