

**UP-G75-12**

Specification		
Nominal Voltage	12V	
Nominal Capacity (20HR)	75.0AH	
Dimension	Length	259±3mm (10.2 inches)
	Width	168±2mm (6.61 inches)
	Container Height	208±3mm (8.19 inches)
	Total Height (with Terminal)	214±3mm (8.43 inches)
	Approx Weight	Approx 23.0 kg (50.7lbs)
Terminal	T6 / T14	
Container Material	ABS	
Rated Capacity	75.0 AH/3.75A	(20hr, 1.80V/cell, 25°C/77°F)
	69.8 AH/6.98A	(10hr, 1.75V/cell, 25°C/77°F)
	60.0 AH/12A	(5hr, 1.75V/cell, 25°C/77°F)
	52 AH/17.36A	(3hr, 1.75V/cell, 25°C/77°F)
	41.25 AH/41.25A	(1hr, 1.67V/cell, 25°C/77°F)
Max. Discharge Current	700A (5s)	
Internal Resistance	Approx 7.9mΩ	
Operating Temperature Range	Discharge: -20~55°C (-4~131°F)	
	Change : 0~40°C (32~104°F)	
	Storage : -20~50°C (-4~122°F)	
Nominal Operating Temperature Range	25±3°C (77±5°F)	
Cycle Use	Initial Charging Current less than 14.0A.Voltage. 14.4V~15.0V at 25°C (77°F) Temp. Coefficient -30mV/°C	
Standby Use	No limit on Initial Charging Current Voltage. 13.5V~13.8V at 25°C (77°F) Temp. Coefficient -20mV/°C	
Capacity affected by Temperature	40°C (104°F)	103%
	25°C (77°F)	100%
	0°C (32°F)	86%
Self Discharge	Batteries may be stored for up to 9 months at 25°C (77°F) and then a freshening charge is required.	

Constant Current Discharge (Amperes) at 25°C (77°F)														
F.V/Time	20min	30min	45min	1h	2h	3h	4h	5h	6h	7h	8h	9h	10h	20h
1.85V/cell	63.43	49.82	38.04	31.82	20.14	15.43	12.75	11.04	9.49	8.4	7.58	6.92	6.55	3.6
1.80V/cell	72.64	55.61	41.89	35.14	21.86	16.5	13.5	11.57	9.96	8.8	7.94	7.29	6.84	3.75
1.75V/cell	81.64	61.18	45.32	37.61	23.14	17.36	14.14	12.00	10.32	9.11	8.2	7.5	6.98	3.83
1.70V/cell	87.96	65.57	48.11	39.75	24.54	18.11	14.57	12.43	10.67	9.41	8.44	7.7	7.14	3.88
1.67V/cell	91.61	68.14	49.82	41.25	25.18	18.75	15.00	12.64	10.82	9.55	8.57	7.8	7.22	3.91
1.60V/cell	99.21	72.86	53.46	43.82	26.14	19.5	15.54	13.07	11.14	9.75	8.72	7.97	7.36	3.96

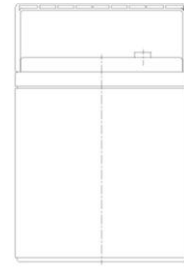
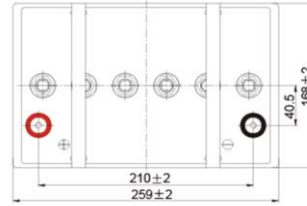
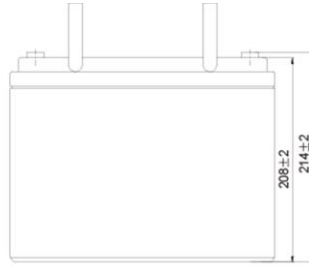
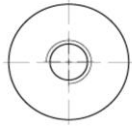
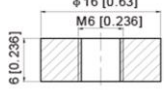
Constant Power Discharge (Watts/cell) at 25°C (77°F)														
F.V/Time	20min	30min	45min	1h	2h	3h	4h	5h	6h	7h	8h	9h	10h	20h
1.85V/cell	121.39	96.00	73.71	61.93	39.43	30.11	25.07	21.75	18.75	16.71	15.11	13.82	13.07	7.19
1.80V/cell	137.25	106.29	80.68	68.04	42.43	32.14	26.46	22.71	19.71	17.36	15.75	14.46	13.61	7.48
1.75V/cell	152.57	115.71	86.57	72.43	44.89	33.86	27.64	23.57	20.36	18.00	16.18	14.89	13.82	7.62
1.70V/cell	162.54	122.89	91.29	76.18	47.36	35.25	28.5	24.21	21.00	18.54	16.71	15.32	14.14	7.7
1.67V/cell	167.36	126.32	93.86	78.54	48.32	36.21	29.04	24.64	21.21	18.75	16.93	15.43	14.36	7.77
1.60V/cell	179.25	134.04	100.07	83.04	50.04	37.39	30.11	25.29	21.64	19.07	17.14	15.75	14.57	7.88



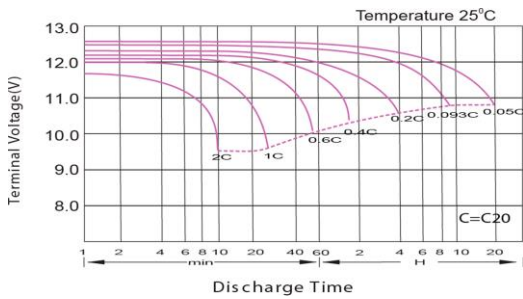
**UP-G75-12**

**Dimensions**

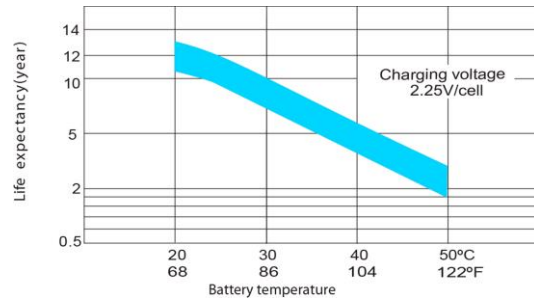
■ T6 Terminal  
Unit: mm [inches]



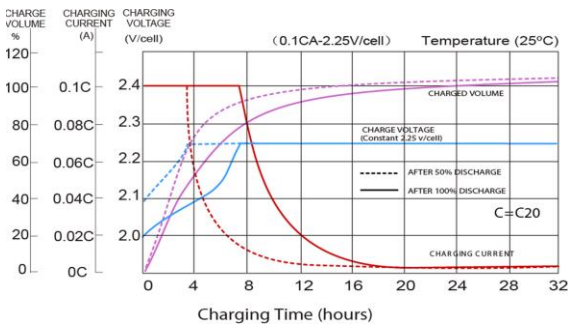
**Discharge Characteristics**



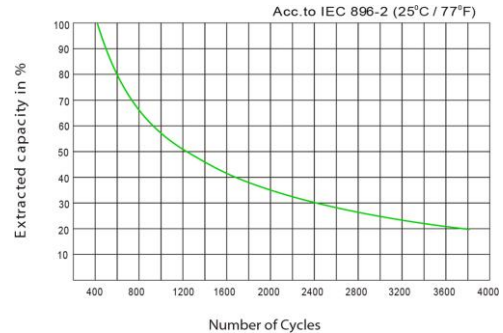
**Effect of Temperature on Long Term Float Life**



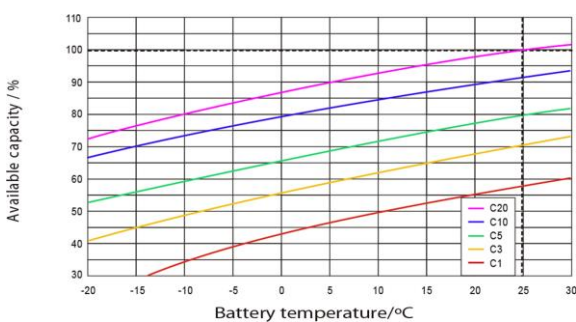
**Float Charging Characteristics**



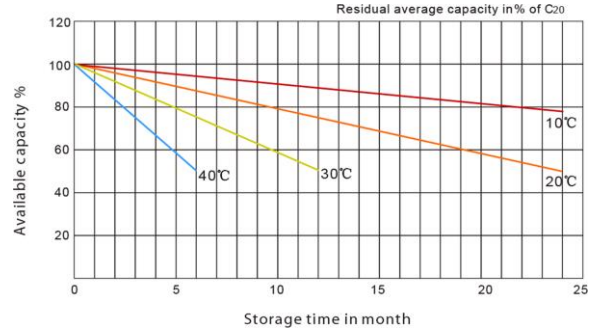
**Cycle Life in Relation to Depth of Discharge**



**Temperature Effects in Relation to Battery Capacity**



**General Relation of Capacity VS. Storage Time**



Poligono industrial La Dehesa  
C/ Dehesa Vieja, nº2 Nave 16  
28052 Madrid (Spain)  
Tel. (+34) 918 021 649  
Fax. (+34) 917 750 542  
info@masterbattery.es

