

UP-G140-12



Specification		
Nominal Voltage	12V	
Nominal Capacity (20HR)	135.0AH	
Dimension	Length	485±3mm (19.09 inches)
	Width	170±2mm (6.69 inches)
	Container Height	240±3mm (9.45 inches)
	Total Height (with Terminal)	240±3mm (9.45 inches)
Approx Weight	Approx 44.2 kg (97.5lbs)	
Terminal	T11	
Container Material	ABS	
Rated Capacity	135.0 AH/6.75A	(20hr, 1.80V/cell, 25°C/77°F)
	125.6 AH/12.56A	(10hr, 1.75V/cell, 25°C/77°F)
	108.0 A H/21.6A	(5hr, 1.75V/cell, 25°C/77°F)
	97.8 AH/32.6A	(3hr, 1.75V/cell, 25°C/77°F)
	74.3 AH/4.3A	(1hr, 1.67V/cell, 25°C/77°F)
Max. Discharge Current	1260A (5s)	
Internal Resistance	Approx 4.2mΩ	
Operating Temperature Range	Discharge:	-20~55°C (-4~131°F)
	Change :	0~40°C (32~104°F)
	Storage :	-20~50°C (-4~122°F)
Nominal Operating Temperature Range	25±3°C (77±5°F)	
Cycle Use	Initial Charging Current less than 27.0A.Voltage. 14.4V~15.0V at 25°C (77°F) Temp. Coefficient -30mV/°C	
Standby Use	No limit on Initial Charging Current Voltage. 13.5V~13.8V at 25°C (77°F) Temp. Coefficient -20mV/°C	
Capacity affected by Temperature	40°C (104°F) 103% 25°C (77°F) 100% 0°C (32°F) 86%	
Self Discharge	Batteries may be stored for up to 9 months at 25°C (77°F) and then a freshening charge is required.	

Constant Current Discharge (Amperes) at 25°C (77°F)														
F.V/Time	20min	30min	45min	1h	2h	3h	4h	5h	6h	7h	8h	9h	10h	20h
1.85V/cell	114.2	89.6	68.4	57.2	36.3	27.7	22.9	19.8	17.1	15.1	13.6	12.5	11.8	6.48
1.80V/cell	130.8	100.2	75.4	63.2	39.3	29.7	24.3	20.8	17.9	15.8	14.3	13.1	12.3	6.75
1.75V/cell	147.0	110.2	81.5	67.6	41.6	31.3	25.4	21.6	18.6	16.4	14.7	13.5	12.56	6.89
1.70V/cell	158.4	118.0	86.6	71.6	44.1	32.6	26.3	22.3	19.2	16.9	15.2	13.9	12.9	6.97
1.67V/cell	164.8	122.6	89.6	74.3	45.3	33.7	26.9	22.7	19.5	17.2	15.4	14.0	13.0	7.04
1.60V/cell	178.6	131.2	96.3	78.8	47.1	35.0	27.9	23.4	20.0	17.6	15.7	14.3	13.3	7.14

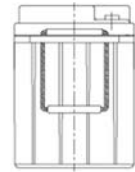
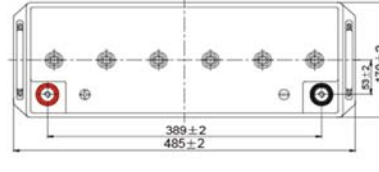
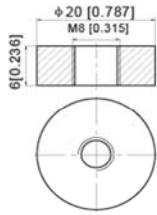
Constant Power Discharge (Watts/cell) at 25°C (77°F)														
F.V/Time	20min	30min	45min	1h	2h	3h	4h	5h	6h	7h	8h	9h	10h	20h
1.85V/cell	218.6	172.7	132.6	111.4	71.0	54.2	45.1	39.1	33.8	30.0	27.1	24.8	23.5	12.9
1.80V/cell	247.1	191.2	145.2	122.4	76.4	57.9	47.6	40.9	35.4	31.3	28.4	26.0	24.5	13.5
1.75V/cell	274.6	208.4	155.8	130.3	80.8	61.0	49.7	42.4	36.5	32.4	29.2	26.8	25.0	13.7
1.70V/cell	292.6	221.2	164.2	137.1	85.2	63.4	51.2	43.6	37.7	33.4	30.0	27.5	25.5	13.9
1.67V/cell	301.2	227.5	168.9	141.4	87.0	65.1	52.3	44.3	38.2	33.8	30.4	27.8	25.8	14.0
1.60V/cell	322.7	241.2	180.1	149.4	90.0	67.4	54.1	45.6	39.0	34.4	30.89	28.32	26.25	14.2



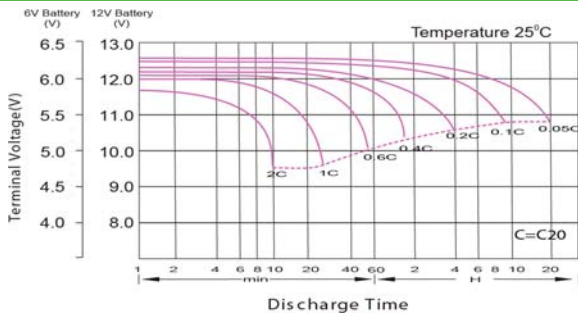
UP-G140-12

Dimensions

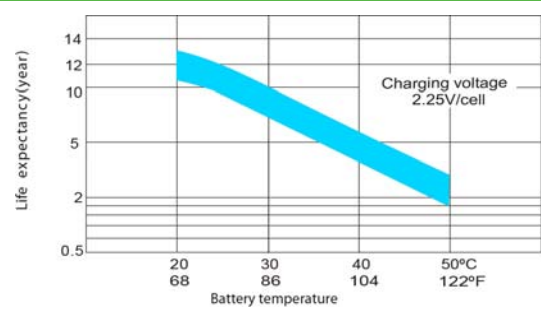
■ T11 Terminal
Unit: mm [inches]



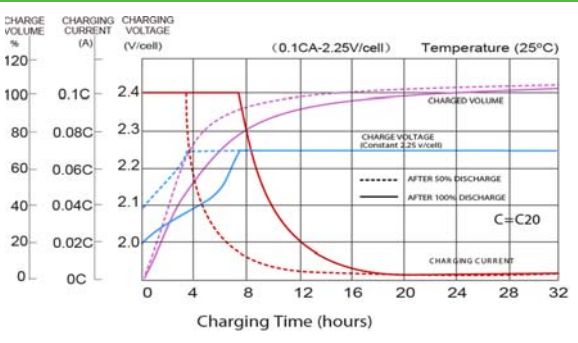
Discharge Characteristics



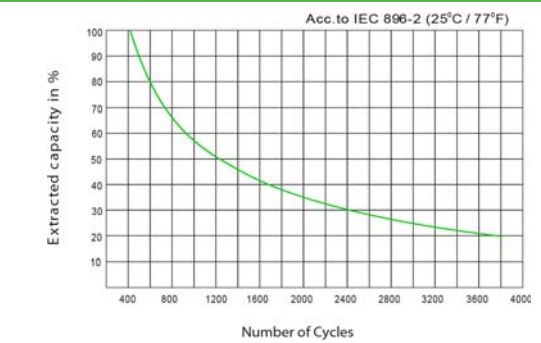
Effect of Temperature on Long Term Float Life



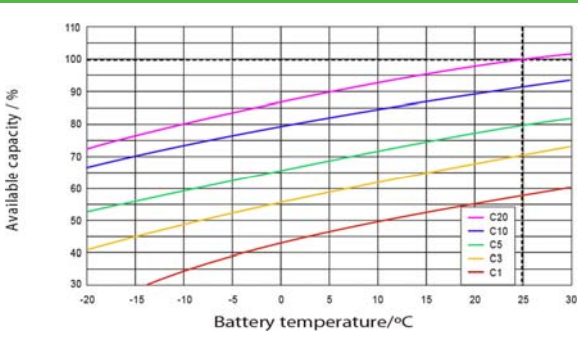
Float Charging Characteristics



Cycle Life in Relation to Depth of Discharge



Temperature Effects in Relation to Battery Capacity



General Relation of Capacity VS. Storage Time

