

UP-SG800-2



Specification		
Nominal Voltage	2V	
Nominal Capacity (10HR)	800.0AH	
Dimension	Length	410±3mm (16.14 inches)
	Width	175±2mm (6.89 inches)
	Container Height	330±3mm (12.99 inches)
	Total Height (with Terminal)	340±3mm (13.39inches)
Approx Weight	Approx 54.9kg (121.05lbs)	
Terminal	T11	
Container Material	ABS	
Rated Capacity	853.4AH/42.67A	(20hr, 1.80V/cell, 25°C/77°F)
	800.0AH/80.00A	(10hr, 1.75V/cell, 25°C/77°F)
	688.0AH/137.6A	(5hr, 1.75V/cell, 25°C/77°F)
	598.5AH/199.5A	(3hr, 1.75V/cell, 25°C/77°F)
	469.3AH/469.3A	(1hr, 1.67V/cell, 25°C/77°F)
Max. Discharge Current	5600A (5s)	
Internal Resistance	Approx 0.6mΩ	
Operating Temperature Range	Discharge: -20~55°C (-4~131°F)	
	Charge : 0~40°C (32~104°F)	
	Storage : -20~50°C (-4~122°F)	
Nominal Operating Temperature Range	25±3°C (77±5°F)	
Cycle Use	Initial Charging Current less than 160.0A.Voltage. 2.4V~2.5V at 25°C(77°F)Temp. Coefficient -5mV/°C	
Standby Use	No limit on Initial Charging Current Voltage. 2.25V~2.3V at 25°C(77°F)Temp. Coefficient -3mV/°C	
Capacity affected by Temperature	40°C (104°F) 103%	
	25°C (77°F) 100%	
	0°C (32°F) 86%	
Self Discharge	Batteries may be stored for up to 9 months at 25°C (77°F) and then a freshening charge is required.	

Constant Current Discharge (Amperes) at 25°C (77°F)														
F.V/Time	20min	30min	45min	1h	2h	3h	4h	5h	6h	7h	8h	9h	10h	20h
1.85V/cell	696.0	547.2	417.1	362.4	231.2	176.3	146.0	126.1	108.8	96.3	86.9	79.4	75.1	40.96
1.80V/cell	799.2	611.2	460.8	400.0	250.4	188.8	154.8	132.5	114.3	100.8	91.1	83.6	78.5	42.67
1.75V/cell	897.6	672.0	497.1	427.2	265.2	199.5	162.2	137.6	118.3	104.5	94.0	86.0	80.0	43.52
1.70V/cell	\	720.0	528.0	452.8	281.2	207.7	167.4	141.8	122.4	107.9	96.8	88.3	81.9	44.12
1.67V/cell	\	748.8	547.2	469.3	288.4	214.4	171.6	144.8	124.4	109.5	98.2	89.5	82.9	44.52
1.60V/cell	\	800.0	587.7	498.4	300.0	222.9	178.0	149.3	127.5	111.8	100.0	91.4	84.5	45.16

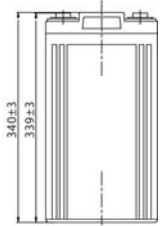
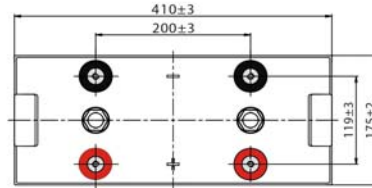
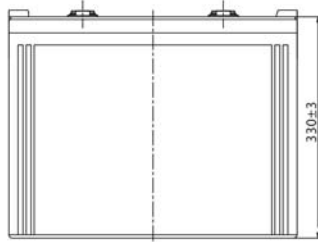
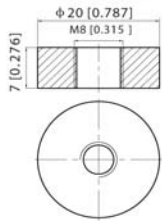
Constant Power Discharge (Watts) at 25°C (77°F)														
F.V/Time	20min	30min	45min	1h	2h	3h	4h	5h	6h	7h	8h	9h	10h	20h
1.85V/cell	1321.7	1046.2	802.4	700.2	448.3	342.7	285.0	247.0	213.9	189.9	171.6	156.9	148.7	81.1
1.80V/cell	1497.7	1157.6	878.3	768.8	483.0	365.7	300.9	258.6	223.8	198.0	179.4	164.8	155.0	84.4
1.75V/cell	1663.3	1258.7	939.0	816.8	510.2	385.6	314.3	267.4	230.9	204.6	184.7	169.5	157.8	86.0
1.70V/cell	\	1339.2	993.7	862.6	538.5	400.3	323.6	274.9	238.6	211.0	189.9	173.7	161.5	87.1
1.67V/cell	\	1374.0	1020.5	887.0	549.4	411.4	330.7	279.8	241.7	213.5	192.2	175.7	163.1	87.8
1.60V/cell	\	1458.4	1090.2	937.0	568.8	425.8	341.9	287.5	246.9	217.4	195.3	179.1	166.0	88.9



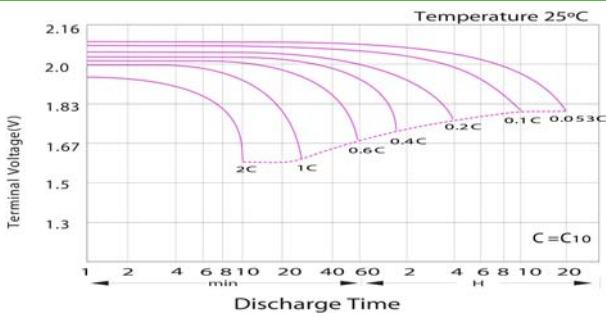
UP-SG800-2

Dimensions

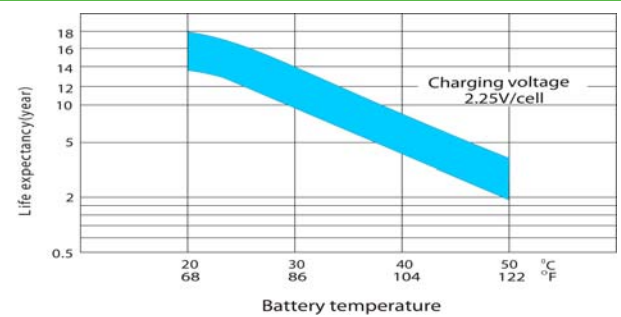
T11 Terminal
Unit: mm [inches]



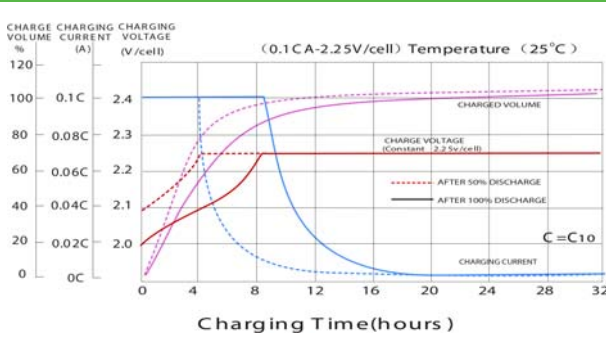
Discharge Characteristics



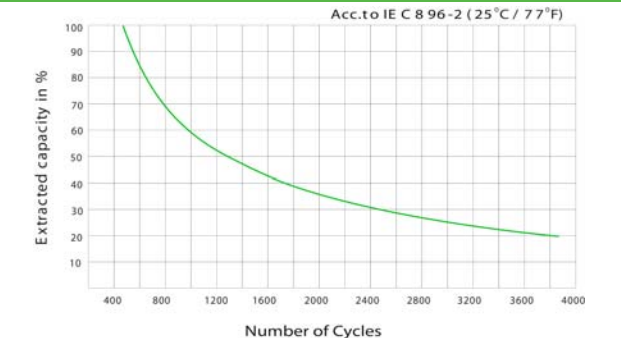
Effect of Temperature on Long Term Float Life



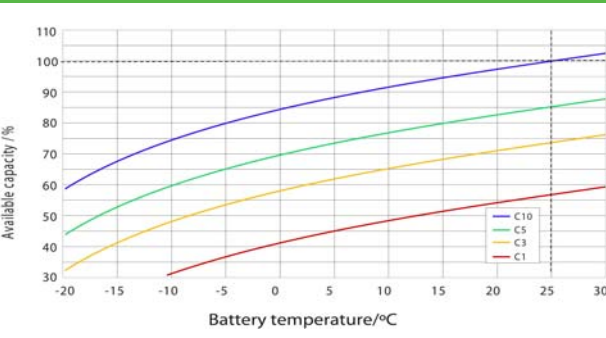
Float Charging Characteristics



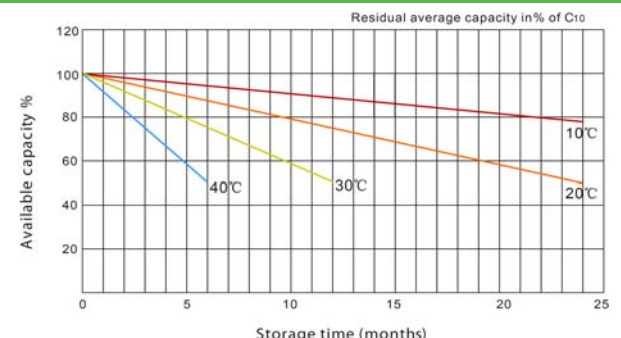
Cycle Life in Relation to Depth of Discharge



Temperature Effects in Relation to Battery Capacity



General Relation of Capacity VS. Storage Time



Poligono industrial La Dehesa
C/ Dehesa Vieja, n°2 Nave 16
28052 Madrid (Spain)
Tel. (+34) 918 021 649
Fax. (+34) 917 750 542
info@masterbattery.es

