

## UP-SG600-2



Specification		
Nominal Voltage	2V	
Nominal Capacity (10HR)	600.0AH	
Dimension	Length	300±3mm (11.81 inches)
	Width	175±2mm (6.89 inches)
	Container Height	330±3mm (12.99 inches)
	Total Height (with Terminal)	340±3mm (13.39inches)
	Approx Weight	Approx 36.5kg (80.5lbs)
Terminal	T11	
Container Material	ABS	
Rated Capacity	640.0AH/32.0A	(20hr, 1.80V/cell, 25°C/77°F)
	600.0AH/60.00A	(10hr, 1.75V/cell, 25°C/77°F)
	516.0AH/103.2A	(5hr, 1.75V/cell, 25°C/77°F)
	448.8AH/149.6A	(3hr, 1.75V/cell, 25°C/77°F)
	352.0AH/352.0A	(1hr, 1.67V/cell, 25°C/77°F)
Max. Discharge Current	4200A (5s)	
Internal Resistance	Approx 0.66mΩ	
Operating Temperature Range	Discharge: -20~55°C (-4~131°F)	
	Charge : 0~40°C (32~104°F)	
	Storage : -20~50°C (-4~122°F)	
Nominal Operating Temperature Range	25±3°C (77±5°F)	
Cycle Use	Initial Charging Current less than 120.0A.Voltage. 2.4V~2.5V at 25°C(77°F)Temp. Coefficient -5mV/°C	
Standby Use	No limit on Initial Charging Current Voltage. 2.25V~2.3V at 25°C(77°F)Temp. Coefficient -3mV/°C	
Capacity affected by Temperature	40°C (104°F) 103%	
	25°C (77°F) 100%	
	0°C (32°F) 86%	
Self Discharge	Batteries may be stored for up to 9 months at 25°C (77°F) and then a freshening charge is required.	

Constant Current Discharge (Amperes) at 25°C (77°F)														
F.V/Time	20min	30min	45min	1h	2h	3h	4h	5h	6h	7h	8h	9h	10h	20h
1.85V/cell	522.0	410.4	312.8	271.8	173.4	132.2	109.5	94.6	81.6	72.3	65.2	59.5	56.3	30.7
1.80V/cell	599.4	458.4	345.6	300.0	187.8	141.6	116.1	99.4	85.7	75.6	68.3	62.7	58.9	32.0
1.75V/cell	673.2	504.0	372.8	320.4	198.9	149.6	121.7	103.2	88.7	78.3	70.5	64.5	60.0	32.6
1.70V/cell	725.4	540.0	396.0	339.6	210.9	155.8	125.6	106.3	91.8	80.9	72.6	66.2	61.4	33.1
1.67V/cell	754.2	561.6	410.4	352.0	216.3	160.8	128.7	108.6	93.3	82.1	73.7	67.1	62.2	33.4
1.60V/cell	817.2	600.0	440.8	373.8	225.0	167.2	133.5	112.0	95.6	83.8	75.0	68.5	63.4	33.9

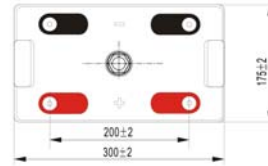
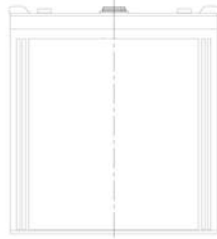
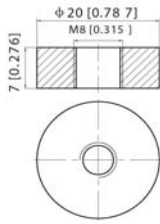
Constant Power Discharge (Watts) at 25°C (77°F)														
F.V/Time	20min	30min	45min	1h	2h	3h	4h	5h	6h	7h	8h	9h	10h	20h
1.85V/cell	991.3	784.7	601.8	525.1	336.2	257.0	213.7	185.2	160.4	142.4	128.7	117.7	111.5	60.9
1.80V/cell	1123.3	868.2	658.7	576.6	362.3	274.3	225.7	194.0	167.9	148.5	134.5	123.6	116.2	63.3
1.75V/cell	1247.4	944.0	704.2	612.6	382.7	289.2	235.8	200.5	173.1	153.5	138.5	127.1	118.4	64.5
1.70V/cell	1329.7	1004.4	745.3	646.9	403.9	300.2	242.7	206.2	178.9	158.3	142.4	130.3	121.1	65.3
1.67V/cell	1366.6	1030.5	765.4	665.3	412.1	308.6	248.0	209.8	181.3	160.1	144.1	131.8	122.3	65.8
1.60V/cell	1464.4	1093.8	817.7	702.7	426.6	319.4	256.5	215.6	185.2	163.0	146.5	134.3	124.5	66.7



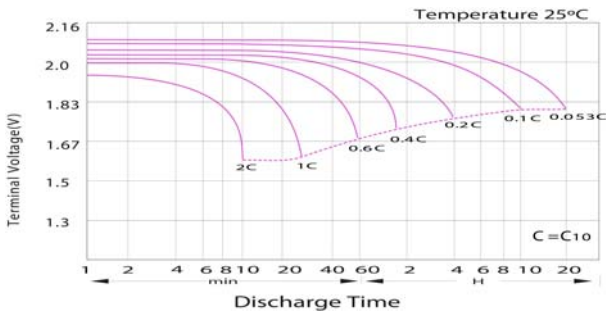
**UP-SG600-2**

**Dimensions**

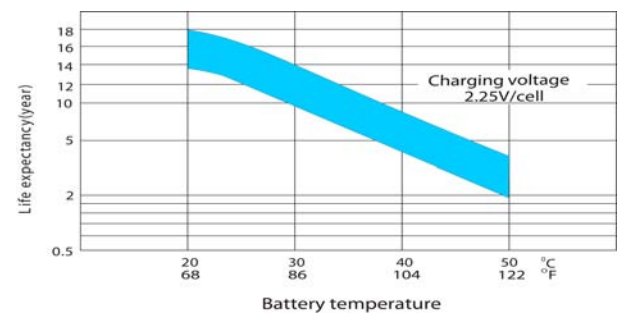
■ T11 Terminal  
Unit: mm [inches]



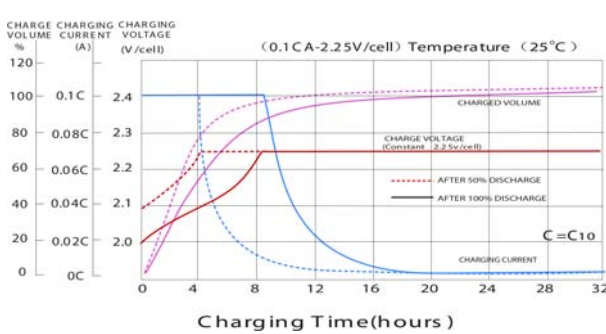
**Discharge Characteristics**



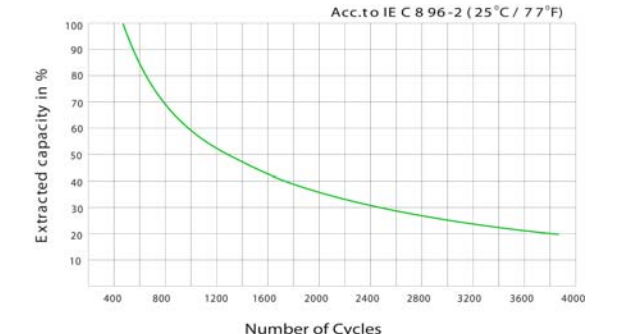
**Effect of Temperature on Long Term Float Life**



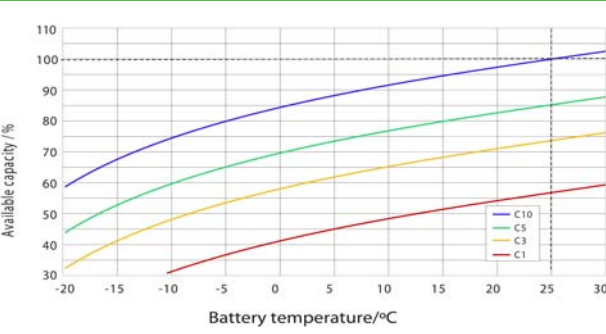
**Float Charging Characteristics**



**Cycle Life in Relation to Depth of Discharge**



**Temperature Effects in Relation to Battery Capacity**



**General Relation of Capacity VS. Storage Time**

