

UP-SG3000-2



Specification		
Nominal Voltage	2V	
Nominal Capacity (10HR)	3000.0AH	
Dimension	Length	709±3mm (27.91 inches)
	Width	350±3mm (13.78 inches)
	Container Height	339±3mm (13.35 inches)
	Total Height (with Terminal)	349±3mm (13.74 inches)
	Approx Weight	Approx 189kg (416.75lbs)
Terminal	T11	
Container Material	ABS	
Rated Capacity	3200.0AH/160.0A	(20hr, 1.80V/cell, 25°C/77°F)
	3000.0AH/300.00A	(10hr, 1.75V/cell, 25°C/77°F)
	2580.0AH/516.0A	(5hr, 1.75V/cell, 25°C/77°F)
	2244.0AH/748.0A	(3hr, 1.75V/cell, 25°C/77°F)
	1760.0AH/1760.0A	(1hr, 1.67V/cell, 25°C/77°F)
Max. Discharge Current	21000A (5s)	
Internal Resistance	Approx 0.24mΩ	
Operating Temperature Range	Discharge: -20~55°C (-4~131°F)	
	Charge : 0~40°C (32~104°F)	
	Storage : -20~50°C (-4~122°F)	
Nominal Operating Temperature Range	25±3°C (77±5°F)	
Cycle Use	Initial Charging Current less than 600.0A.Voltage. 2.4V~2.5V at 25°C(77°F)Temp. Coefficient -5mV/°C	
Standby Use	No limit on Initial Charging Current Voltage. 2.25V~2.3V at 25°C(77°F)Temp. Coefficient -3mV/°C	
Capacity affected by Temperature	40°C (104°F) 103%	
	25°C (77°F) 100%	
	0°C (32°F) 86%	
Self Discharge	Batteries may be stored for up to 9 months at 25°C (77°F) and then a freshening charge is required.	

Constant Current Discharge (Amperes) at 25°C (77°F)														
F.V/Time	20min	30min	45min	1h	2h	3h	4h	5h	6h	7h	8h	9h	10h	20h
1.85V/cell	2610.0	2052.0	1564.0	1359.0	867.0	661.0	547.5	472.8	408.0	361.3	325.9	297.7	281.7	153.6
1.80V/cell	2997.0	2292.0	1728.0	1500.0	939.0	708.0	580.5	496.8	428.5	378.0	341.6	313.3	294.3	160.0
1.75V/cell	3366.0	2520.0	1864.0	1602.0	994.5	748.0	608.3	516.0	443.5	391.7	352.5	322.7	300.0	163.2
1.70V/cell	3627.0	2700.0	1980.0	1698.0	1054.5	779.0	627.8	531.6	459.0	404.6	363.0	331.0	307.2	165.5
1.67V/cell	3771.0	2808.0	2052.0	1760.0	1081.5	804.0	643.5	543.0	466.5	410.6	368.3	335.7	310.8	167.0
1.60V/cell	/	3000.0	2204.0	1869.0	1125.0	836.0	667.5	559.8	478.0	419.1	375.0	342.7	316.8	169.4

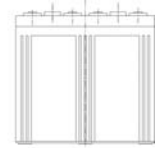
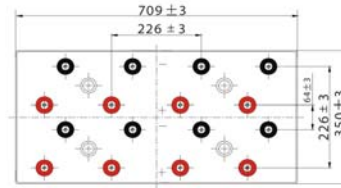
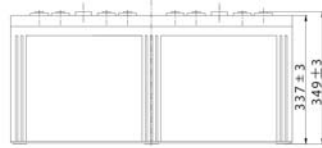
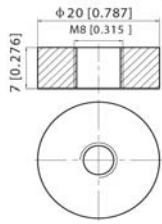
Constant Power Discharge (Watts) at 25°C (77°F)														
F.V/Time	20min	30min	45min	1h	2h	3h	4h	5h	6h	7h	8h	9h	10h	20h
1.85V/cell	4956.4	3923.4	3009.1	2625.6	1681.1	1285.0	1068.7	926.2	802.1	712.1	643.6	588.5	557.5	304.3
1.80V/cell	5616.4	4341.0	3293.6	2883.0	1811.3	1371.4	1128.5	969.8	839.4	742.4	672.7	617.9	581.2	316.5
1.75V/cell	6237.2	4720.0	3521.1	3063.0	1913.4	1445.9	1178.8	1002.6	865.7	767.4	692.7	635.7	591.9	322.5
1.70V/cell	6648.3	5022.0	3726.4	3234.7	2019.4	1501.1	1213.4	1030.8	894.6	791.3	712.2	651.4	605.5	326.6
1.67V/cell	6833.1	5152.7	3827.0	3326.1	2060.3	1542.9	1240.0	1049.1	906.4	800.6	720.7	658.9	611.7	329.2
1.60V/cell	/	5469.0	4088.4	3513.7	2133.0	1596.8	1282.3	1078.2	925.9	815.2	732.4	671.6	622.5	333.5



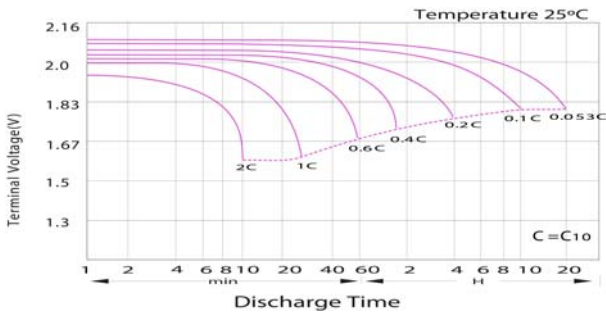
UP-SG3000-2

Dimensions

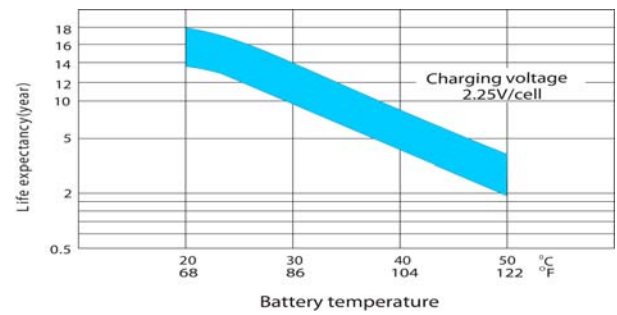
■ T11 Terminal
Unit: mm [inches]



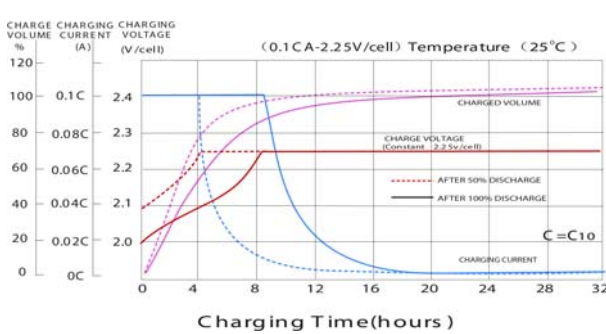
Discharge Characteristics



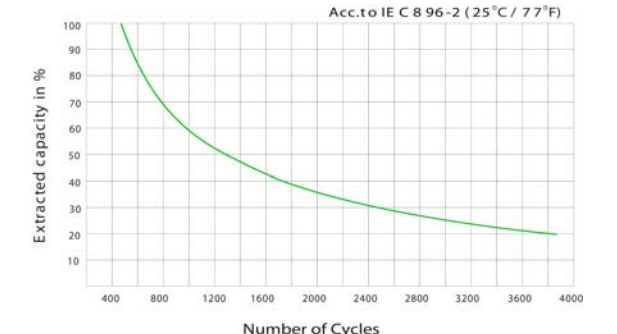
Effect of Temperature on Long Term Float Life



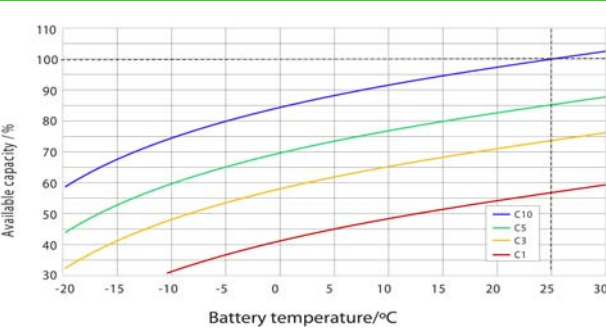
Float Charging Characteristics



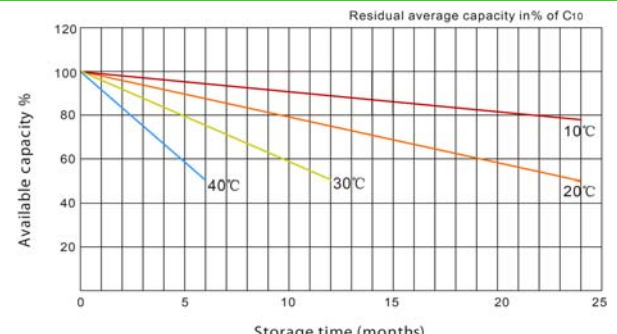
Cycle Life in Relation to Depth of Discharge



Temperature Effects in Relation to Battery Capacity



General Relation of Capacity VS. Storage Time



Poligono industrial La Dehesa
C/ Dehesa Vieja, nº2 Nave 16
28052 Madrid (Spain)
Tel. (+34) 918 021 649
Fax. (+34) 917 750 542
info@masterbattery.es

