

**UP-SG1000-2**



Specification		
Nominal Voltage	2V	
Nominal Capacity (10HR)	1000.0AH	
Dimension	Length	475±3mm (18.70 inches)
	Width	175±2mm (6.89 inches)
	Container Height	328±3mm (12.91 inches)
	Total Height (with Terminal)	338±3mm (13.31 inches)
Approx Weight	Approx 61.3kg (136.7lbs)	
Terminal	T11	
Container Material	ABS	
Rated Capacity	1066.7AH/53.335A	(20hr, 1.80V/cell, 25°C/77°F)
	1000.0AH/100.00A	(10hr, 1.75V/cell, 25°C/77°F)
	860.0AH/172.0A	(5hr, 1.75V/cell, 25°C/77°F)
	747.9AH/249.3A	(3hr, 1.75V/cell, 25°C/77°F)
	586.7AH/586.7A	(1hr, 1.67V/cell, 25°C/77°F)
Max. Discharge Current	7000A (5s)	
Internal Resistance	Approx 0.54mΩ	
Operating Temperature Range	Discharge: -20~55°C (-4~131°F)	
	Charge : 0~40°C (32~104°F)	
	Storage : -20~50°C (-4~122°F)	
Nominal Operating Temperature Range	25±3°C (77±5°F)	
Cycle Use	Initial Charging Current less than 200.0A.Voltage. 2.4V~2.5V at 25°C(77°F)Temp. Coefficient -5mV/°C	
Standby Use	No limit on Initial Charging Current Voltage. 2.25V~2.3V at 25°C(77°F)Temp. Coefficient -3mV/°C	
Capacity affected by Temperature	40°C (104°F) 103%	
	25°C (77°F) 100%	
	0°C (32°F) 86%	
Self Discharge	Batteries may be stored for up to 9 months at 25°C (77°F) and then a freshening charge is required.	

Constant Current Discharge (Amperes) at 25°C (77°F)													
F.V/Time	30min	45min	1h	2h	3h	4h	5h	6h	7h	8h	9h	10h	20h
1.85V/cell	684.0	521.3	453.0	289.0	220.3	182.5	157.6	136.0	120.4	108.6	99.2	93.9	51.20
1.80V/cell	764.0	576.0	500.0	313.0	236.0	193.5	165.6	142.8	126.0	113.9	104.4	98.1	53.34
1.75V/cell	840.0	621.3	534.0	331.5	249.3	202.8	172.0	147.8	130.6	117.5	107.6	100.0	54.40
1.70V/cell	900.0	660.0	566.0	351.5	259.7	209.3	177.2	153.0	134.9	121.0	110.3	102.4	55.15
1.67V/cell	936.0	684.0	586.7	360.5	268.0	214.5	181.0	155.5	136.9	122.8	111.9	103.6	55.65
1.60V/cell	\	734.7	623.0	375.0	278.7	222.5	186.6	159.3	139.7	125.0	114.2	105.6	56.45

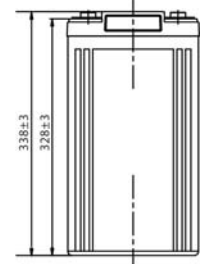
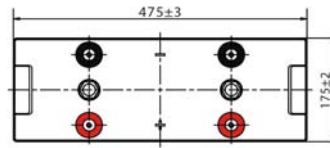
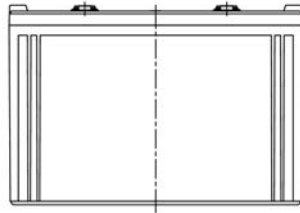
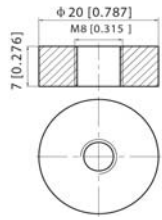
Constant Power Discharge (Watts) at 25°C (77°F)													
F.V/Time	30min	45min	1h	2h	3h	4h	5h	6h	7h	8h	9h	10h	20h
1.85V/cell	1307.8	1003.0	875.2	560.4	428.3	356.2	308.7	267.4	237.4	214.5	196.2	185.8	101.4
1.80V/cell	1447.0	1097.9	961.0	603.8	457.1	376.2	323.3	279.8	247.5	224.2	206.0	193.7	105.5
1.75V/cell	1573.3	1173.7	1021.0	637.8	482.0	392.9	334.2	288.6	255.8	230.9	211.9	197.3	107.5
1.70V/cell	1674.0	1242.1	1078.2	673.1	500.4	404.5	343.6	298.2	263.8	237.4	217.1	201.8	108.9
1.67V/cell	1717.6	1275.7	1108.9	686.8	514.3	413.3	349.7	302.1	266.9	240.2	219.6	203.9	109.7
1.60V/cell	\	1362.8	1171.2	711.0	532.3	427.4	359.4	308.6	271.7	244.1	223.9	207.5	111.2



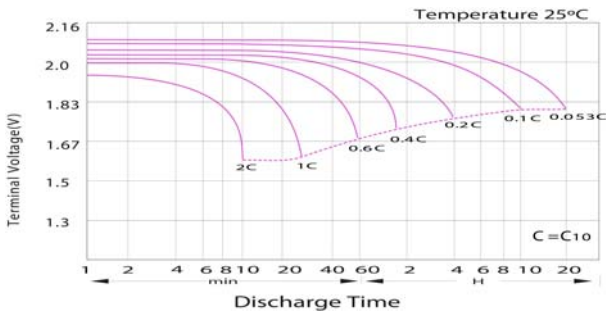
**UP-SG1000-2**

**Dimensions**

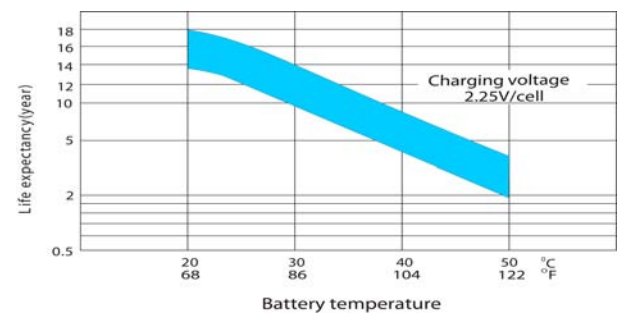
■ T11 Terminal  
Unit: mm [inches]



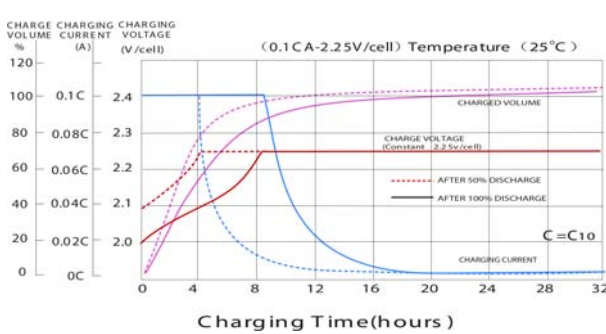
**Discharge Characteristics**



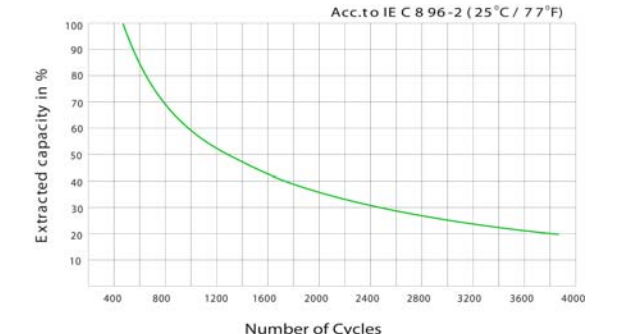
**Effect of Temperature on Long Term Float Life**



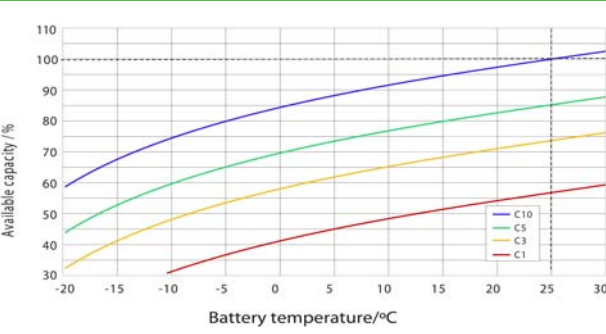
**Float Charging Characteristics**



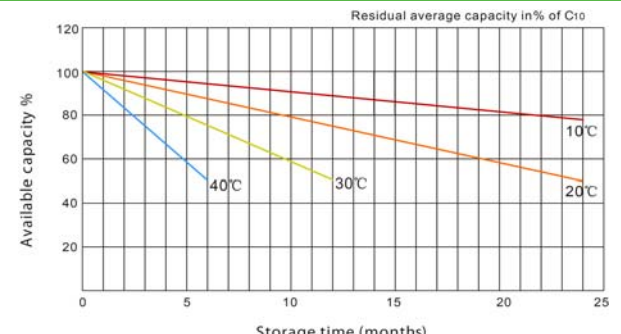
**Cycle Life in Relation to Depth of Discharge**



**Temperature Effects in Relation to Battery Capacity**



**General Relation of Capacity VS. Storage Time**



Poligono industrial La Dehesa  
C/ Dehesa Vieja, nº2 Nave 16  
28052 Madrid (Spain)  
Tel. (+34) 918 021 649  
Fax. (+34) 917 750 542  
info@masterbattery.es

